



# IDh

Innovación y  
Desarrollo de herrajes

# RU-1501ZR-IN3

## CARRO SIMPLE REGULABLE

Roller for sliding Doors and Windows

### Aplicaciones-Applications

Carro para ventanas y puertas correderas, desarrollados a la medida del cliente.

Roller designed for aluminium doors and windows, under the requirements of our customers.

### Características-Features

Carro simple fabricado en zamak con regulación de altura (140 Kg/hoja).

Simple roller made of zamak with a regulation system (140 Kg per leaf weight supported).

### Compuesto por -Made of

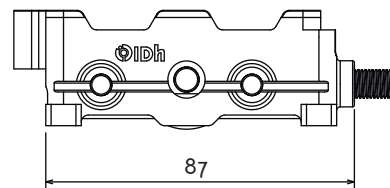
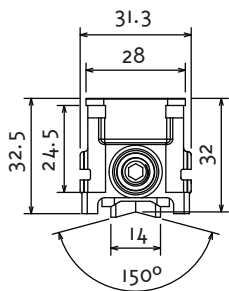
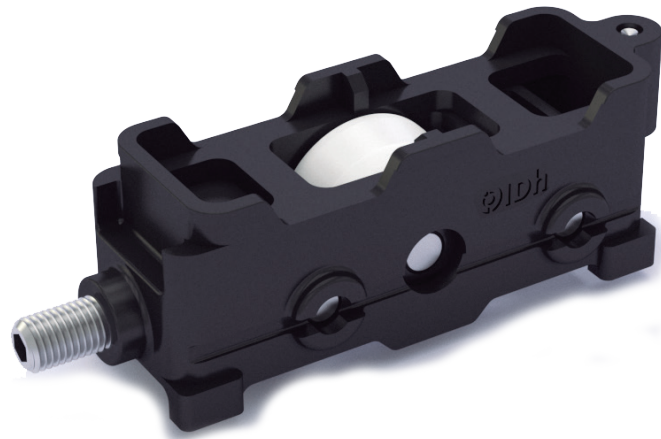
Rodamientos de agujas y eje en acero inoxidable AISI 303C

Pista exterior en POM H.

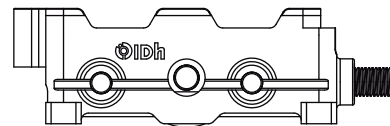
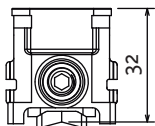
Tornillería en acero inoxidable AISI 304.

Needle bearings with POM H external ring.

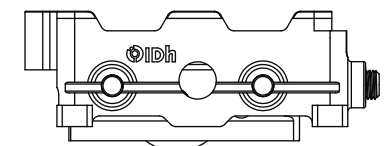
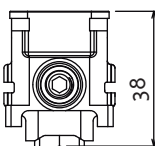
Screws in stainless steel AISI 304.



REGULACIÓN/ADJUSTMENT RANGE 6 MM.



MÁXIMO/MAXIMUM 38 MM



#### Código - Reference

RU-1501ZR-IN3 Carro regulable CAT SIMPLE S-150

#### Componentes - Components

Carcasa exterior / exterior casing **Zamak**

Carcasa interior / inner casing **Zamak**

Rodamientos de agujas-eje / Needle bearings-shaft **INOX**

Tornillos / screws **AISI 304**

#### ENSAYO - Test **UNE-EN 13.126-15**

##### Ensayos mecánicos - Mechanical tests

Laboratorio - Lab : **INTERNO.** / Nº Informe - Report : EP - 00152

Ensayo de Durabilidad:

Carga - Weight **140 kg (Por hoja/by leaf)**

N ciclos - No. Cycles **30.000**

Resultado - Retrieved Result: **Satisfactorio** - Satisfactory

#### ENSAYO - Test **UNE-EN 1670**

##### Resistencia a la Corrosión - Resistance to Corrosion

Laboratorio - Lab : **INTERNO.** / Nº Informe - Report : EP - 00152

Resultado Obtenido: **GRADO 4**

Retrieved Result: Grade 4

#### Embalaje - Packaging

Pack 50 unid.

249X135X98 cms.

10,8 kgs